

Auf dem Turm

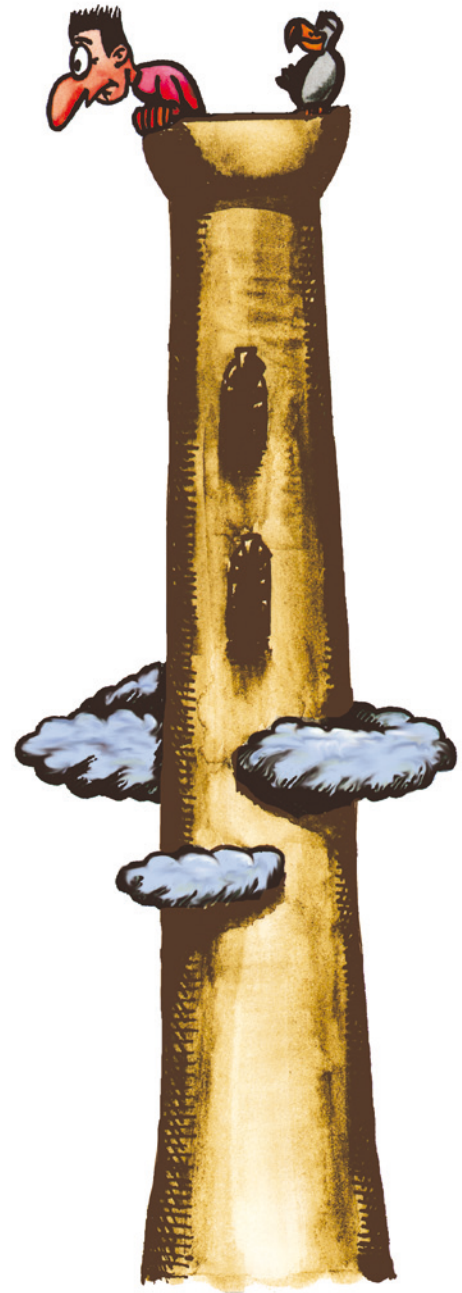
Musical notation for 'Auf dem Turm' in G major, 4/4 time. The first staff includes a red '4' in the time signature and the counting sequence: Zähle: 1 2 3 - 4 1 2 3 - 4. The piece consists of three staves of music.

Eins, zwei, drei 4+5

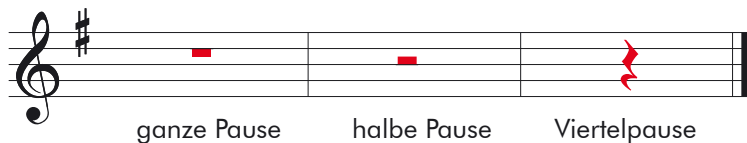
Musical notation for 'Eins, zwei, drei' in G major, 3/4 time. The first staff includes a red '3' in the time signature and the counting sequence: Zähle: 1 2 3 1 2 3. The piece consists of three staves of music.

Bergauf und bergab 6

Musical notation for 'Bergauf und bergab' in G major, 2/4 time. The first system has two staves (1. and 2.) with a red '2' in the time signature and counting: Zähle: 1 2 1 - 2. The second system also has two staves. The piece consists of two systems of two staves each.



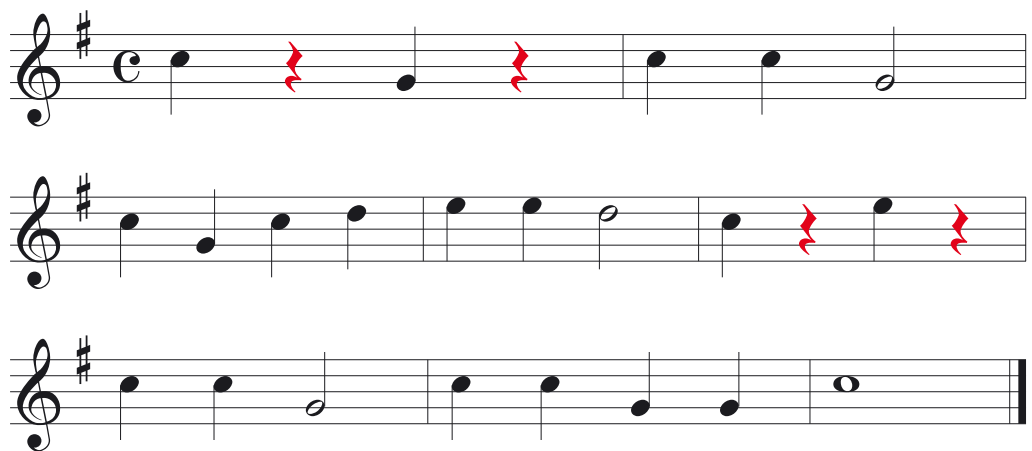
Die Pausen



Bei einer ganzen Pause zählt man bis vier.
 Bei einer halben Pause zählt man bis zwei.
 Bei einer Viertelpause zählt man eins.

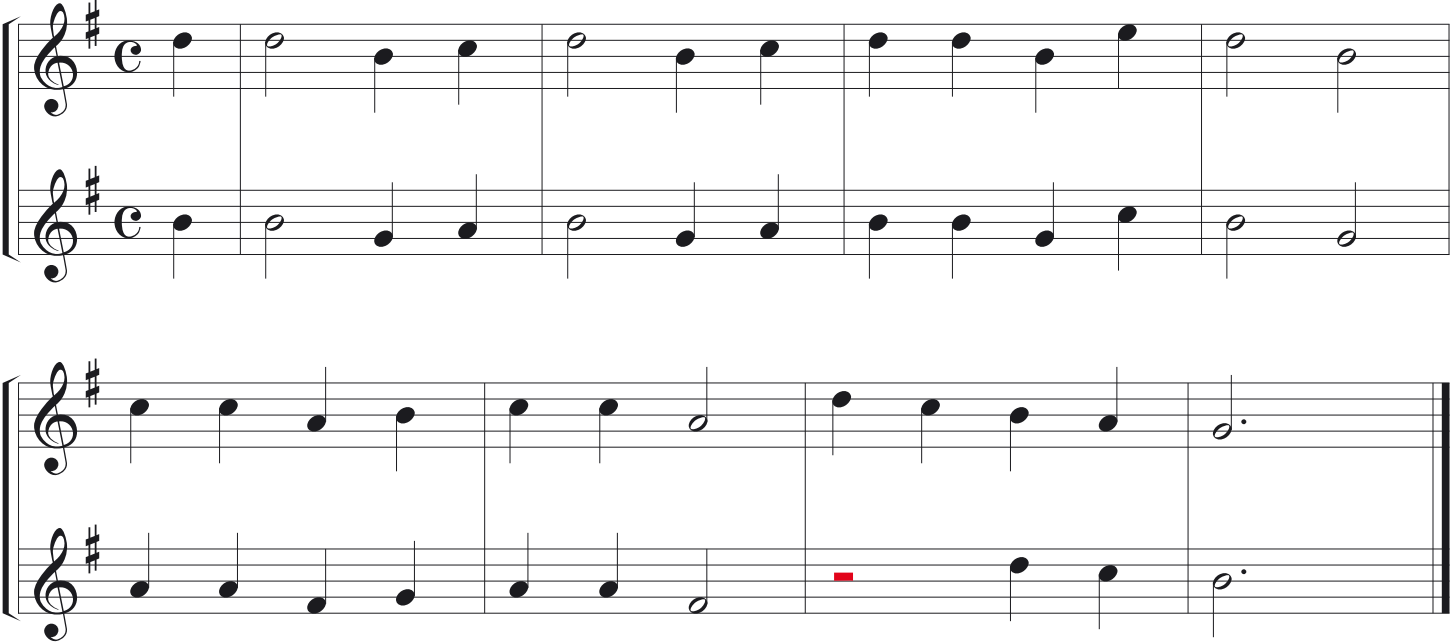


Eins, zwei, wer kocht Brei?  27+28 

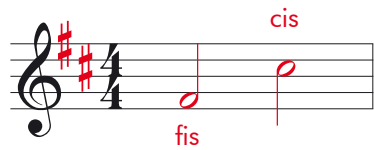


A-Tisket A-Tasket

aus den USA

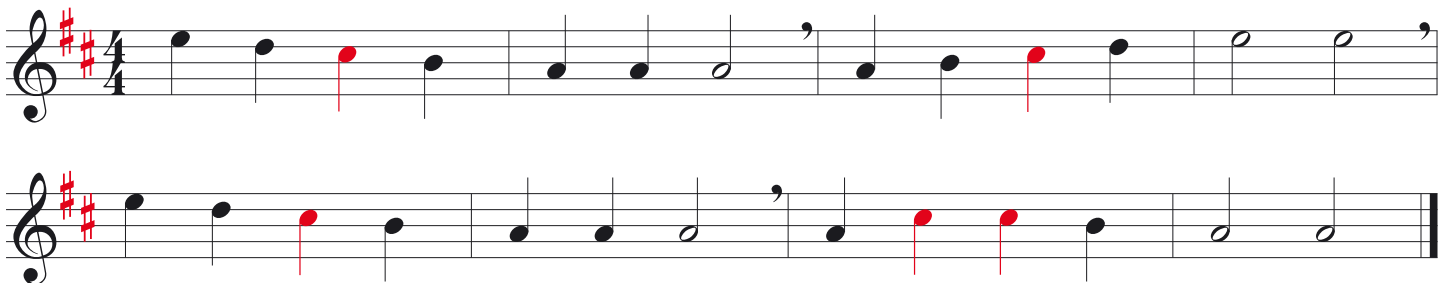


Der Zeilenanfang mit zwei Kreuz-Vorzeichen

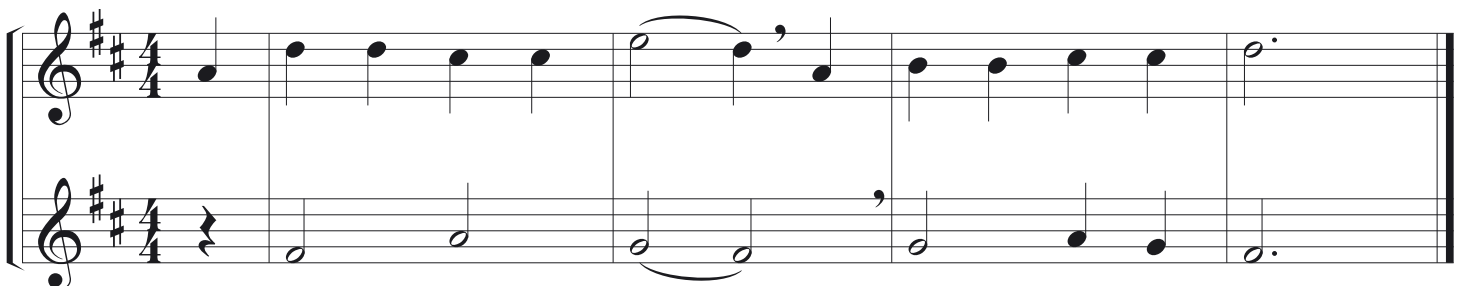


Wenn am Anfang der Zeile zwei Kreuz-Vorzeichen stehen, eines auf der hohen f-Linie und eines im c-Zwischenraum, dann werden alle f-Noten zu fis erhöht und alle c-Noten zu cis.

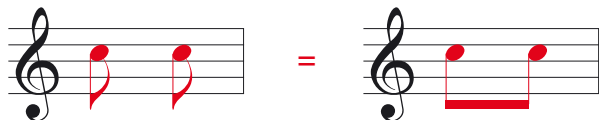
Unsre Katz hat Junge g'habt 61



Im Zirkus 62



Achtelnoten



Eine Achtelnote ist halb so lang wie eine Viertelnote. Eine Viertelnote hat den Wert von zwei Achtelnoten.

Die schönen Damen



67



aus Frankreich



Zähle: 1 2 3 4 und



Der verlorene Akkord

Arthur Sullivan
(1842 - 1900)



Zähle: 1 2 und 3 4 und



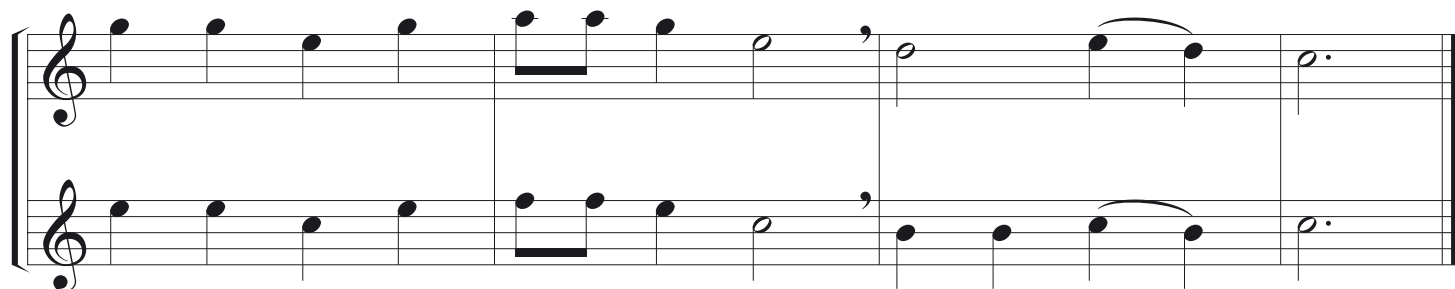
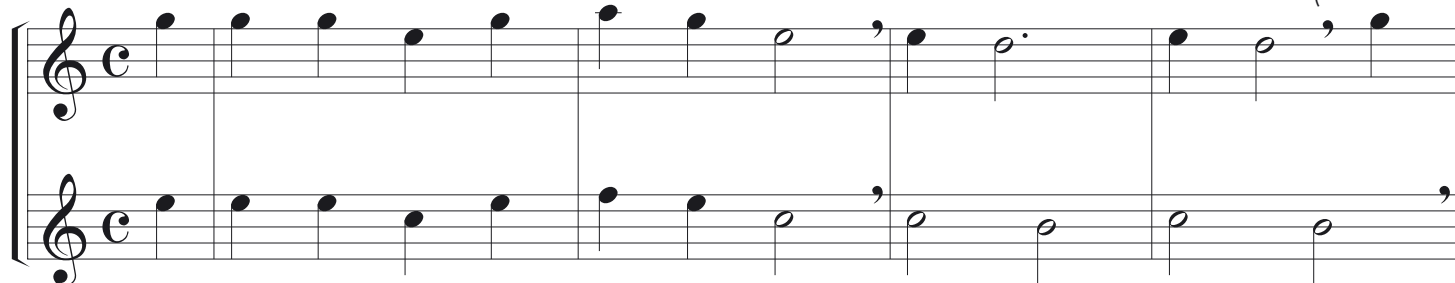
Wettrennen



68



Stephen C. Foster
(1826-1864)



Auf, auf zum fröhlichen Jagen  96 

Musical score for 'Auf, auf zum fröhlichen Jagen' in 4/4 time. The score consists of five staves. The first staff begins with a treble clef and a 4/4 time signature. The second staff includes the dynamic marking *mf(2.xp)*. The third staff includes *mf* and *cresc.*. The fourth staff includes *f*. The fifth staff concludes the piece.



Bella Bimba  97 

aus Italien

Musical score for 'Bella Bimba' in 3/4 time. The score consists of four systems of two staves each. The first system begins with a treble clef and a 3/4 time signature, and includes the dynamic marking *mf*. The second system includes *mf*. The third system includes *Fine (Ende)* and *p*. The fourth system includes *p*. The score concludes with a double bar line and repeat signs.

Da capo al Fine
(Vom Anfang bis Fine)